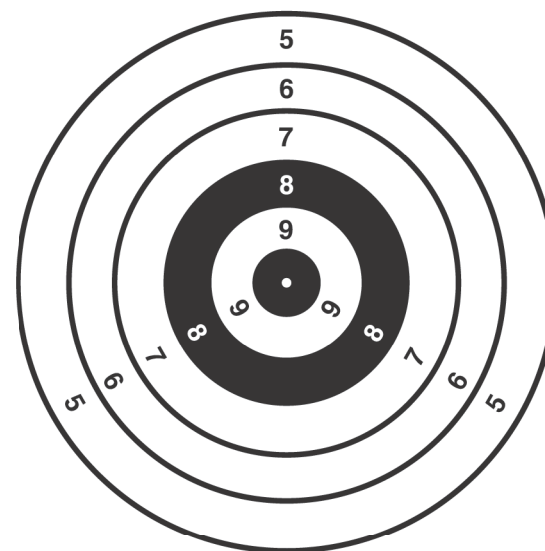
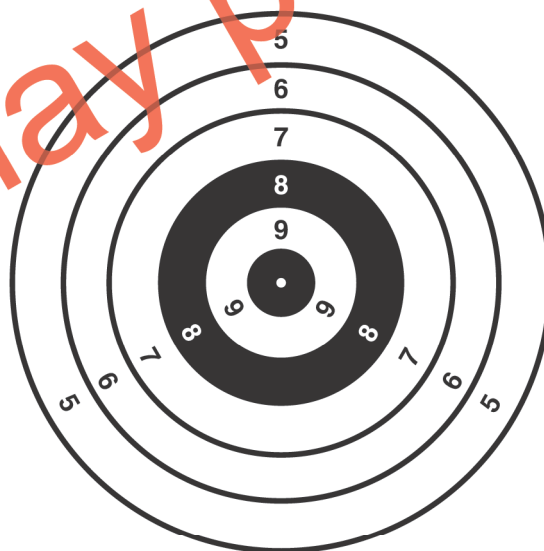
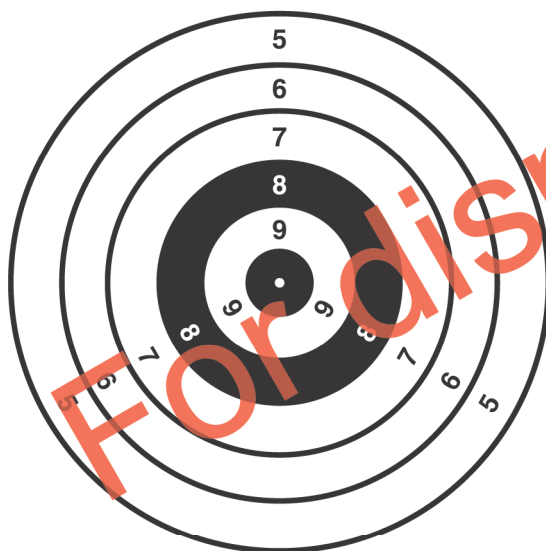
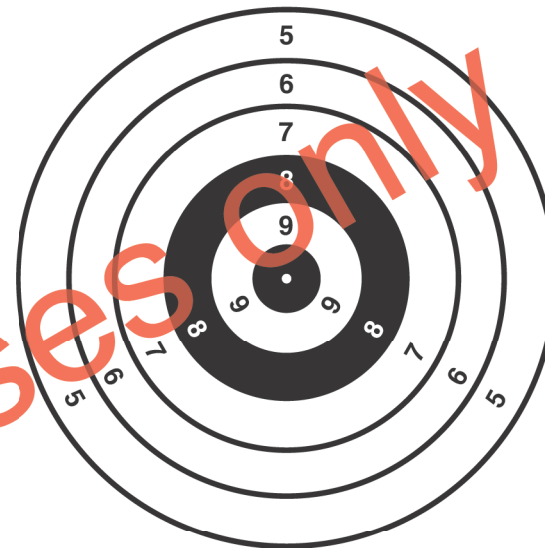
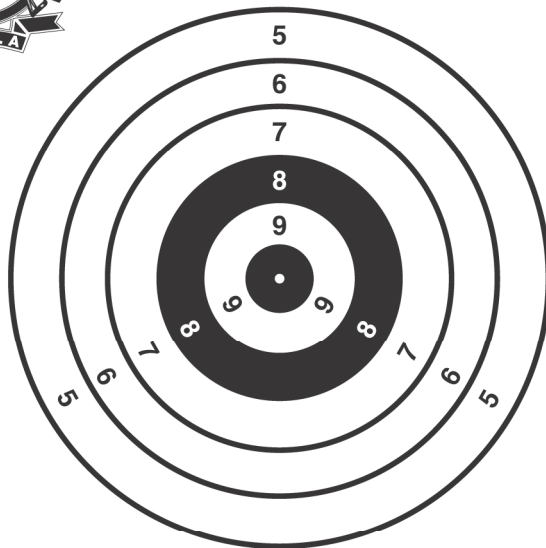




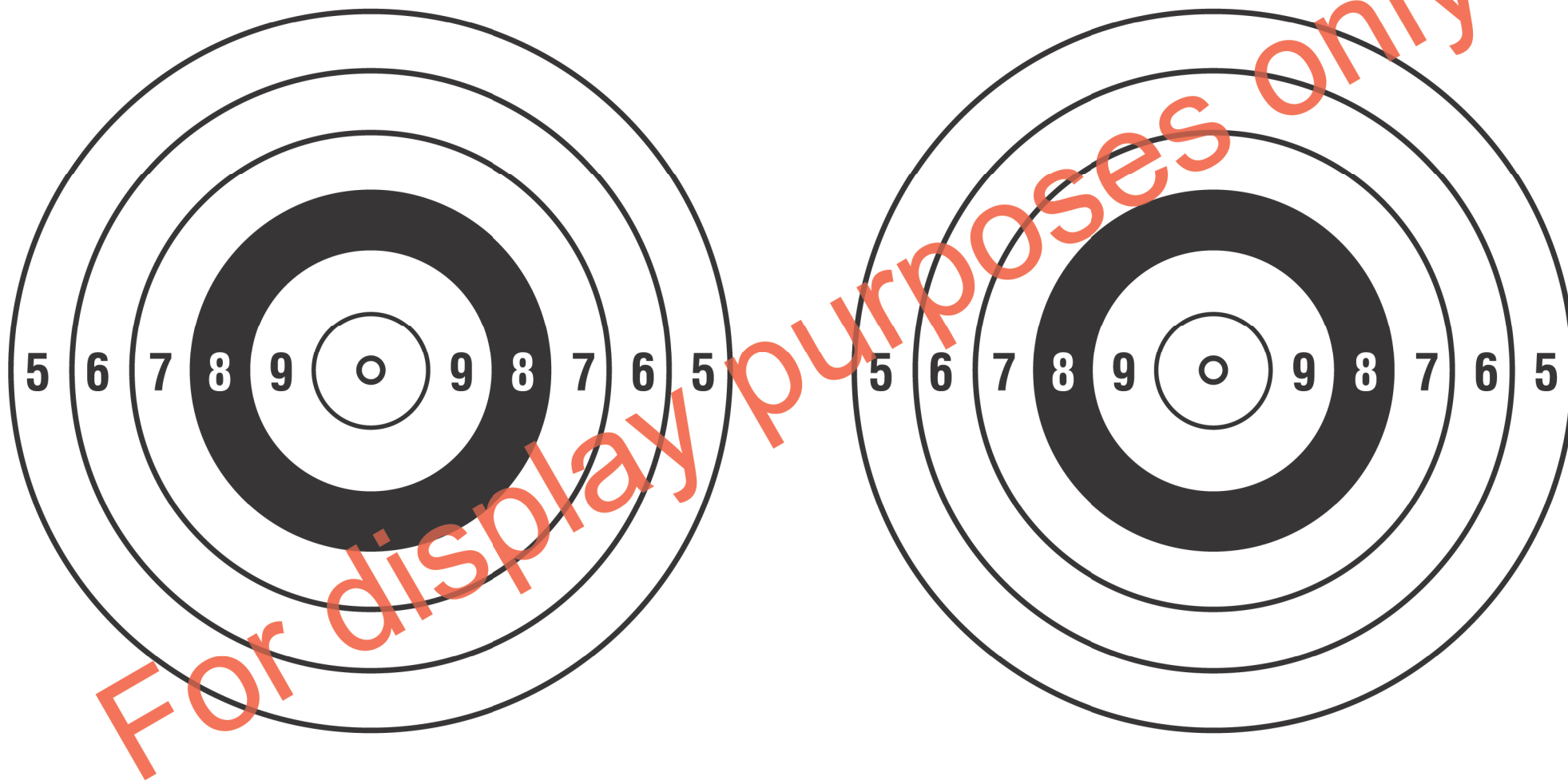
SSAA OFFICIAL PRACTICE TARGET – 6 TARGETS

SIGHTER



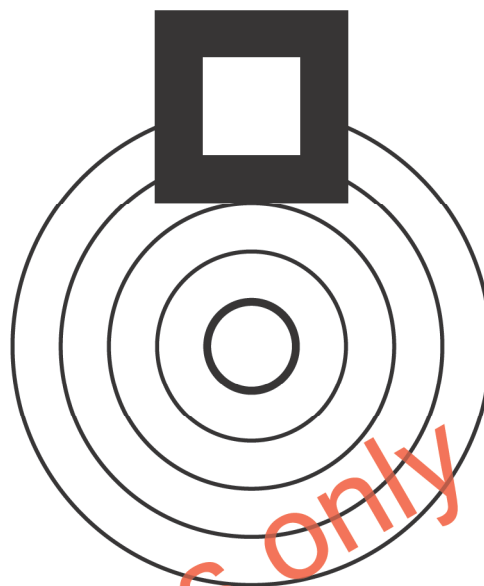
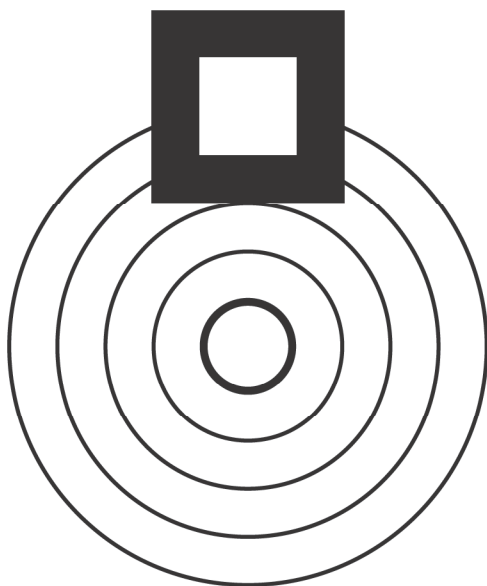


SSAA OFFICIAL PRACTICE TARGET – 50 YARD RIMFIRE





SSAA OFFICIAL PRACTICE TARGET – 100 YARD BENCHREST

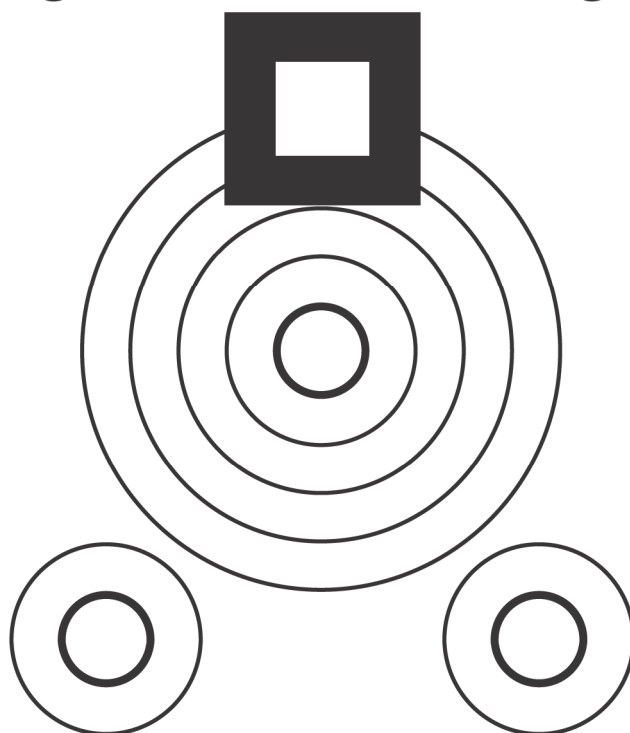
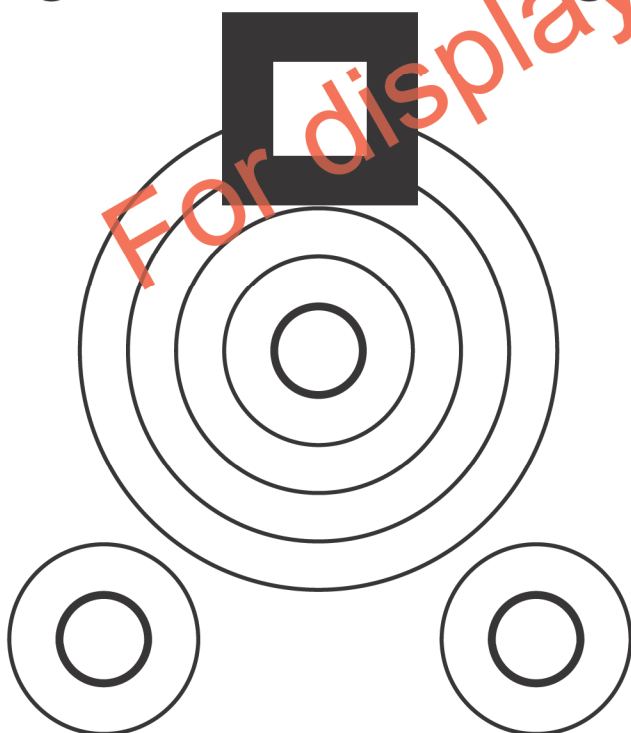


S

S

S

S





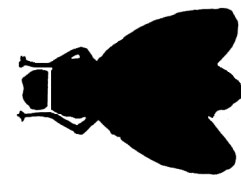
SSAA OFFICIAL PRACTICE TARGET – BENCHREST SILHOUETTE 50M RIMFIRE OR 100 YD C/FIRE



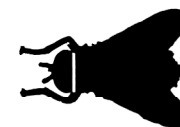
MOUSE
2 POINTS



COCKROACH
3 POINTS



WASP
4 POINTS



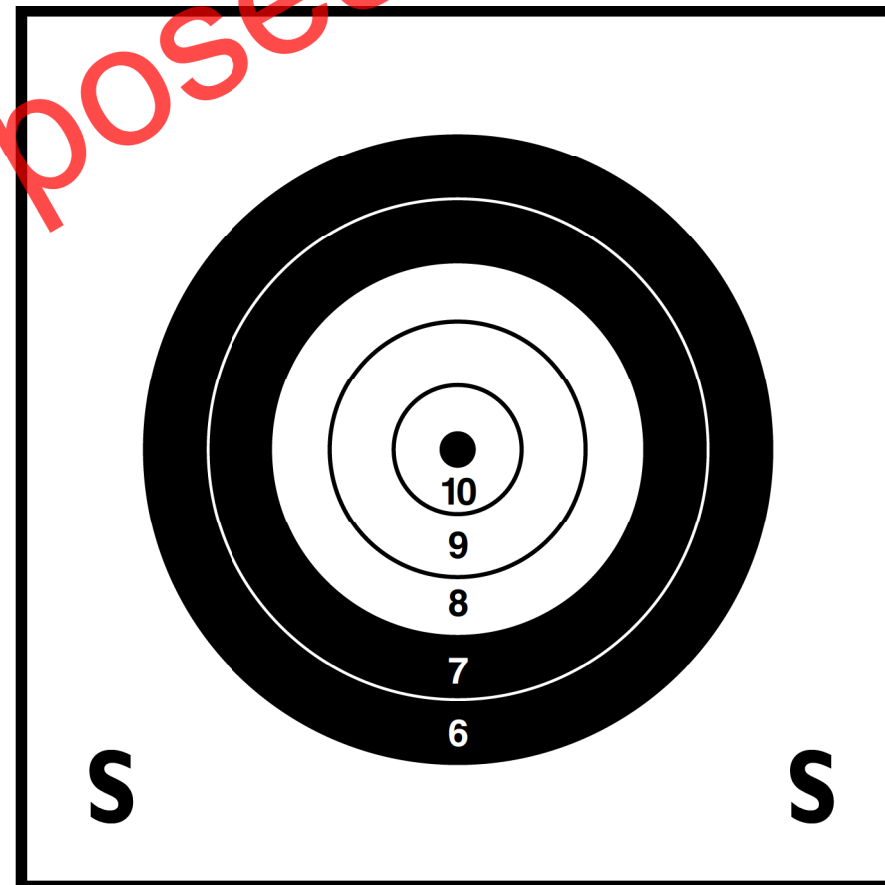
BLOWFLY
5 POINTS



RAT
1 POINT

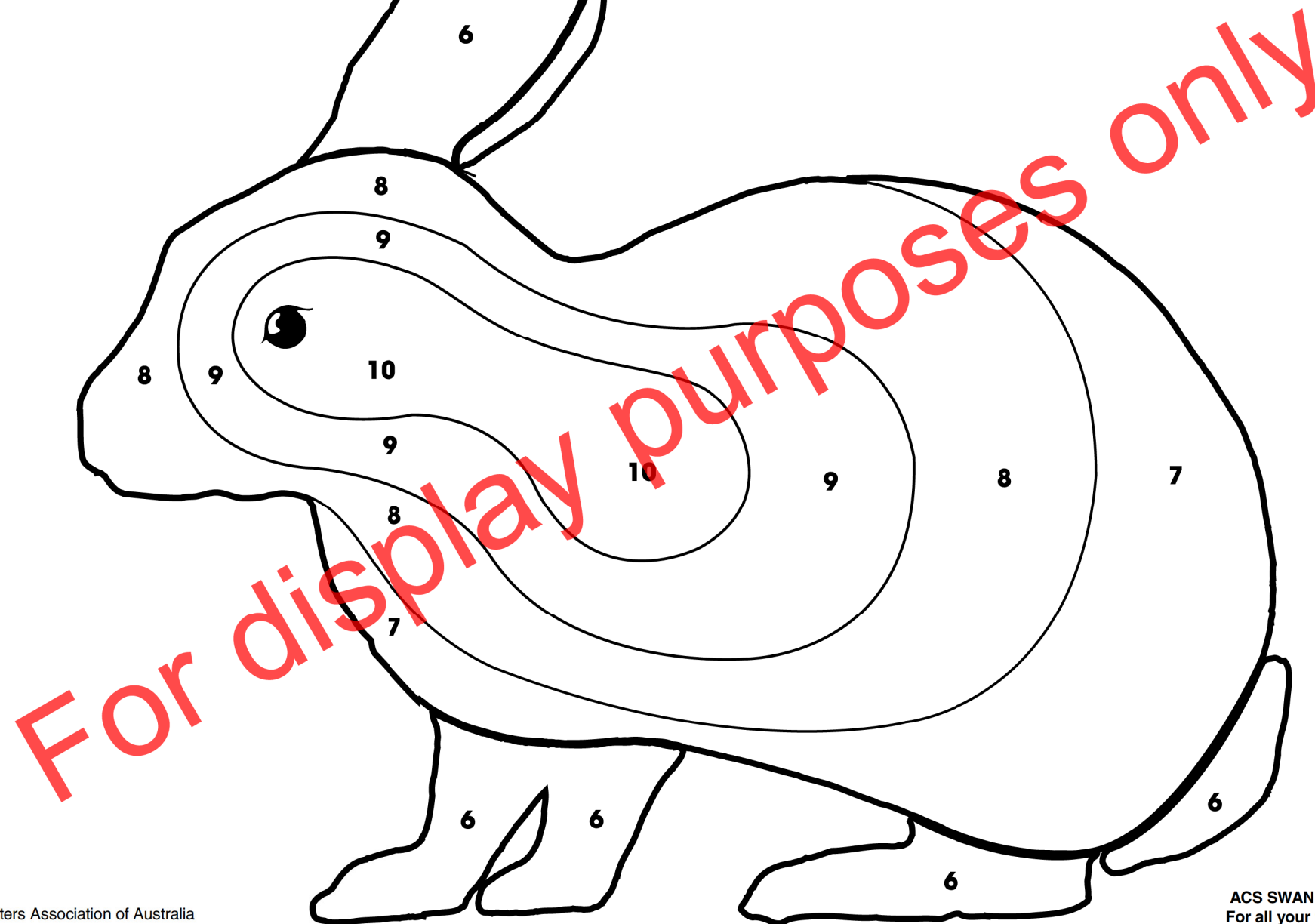
5 Scoring shots only any no. of sighters - in sighter box only if more than 5 shots on sheet - not counting those in sighter box deduct the highest scoring shots from score.

HEAD SHOTS + 0.1





SSAA OFFICIAL PRACTICE TARGET – RABBIT TARGET





SSAA OFFICIAL PRACTICE TARGET – FERAL CAT

